

Simtrak™ News

Premier Software, Inc. • Box 203 • Winfield, IL 60190 USA

Tel: 001-630-562-4100 Fax: 001-312-803-1669 e: sales@simtrak.com

November 1, 2007

web: www.simtrak.com

TOPICS IN THIS ISSUE

- Backup Your Data
- Tech Talk
- Injury Surveillance
- Sports Medicine Research
- Third Party Provider

TECH TALK

WINDOWS VISTA

Simtrak™ Mobility operation is certified under Windows 2000 and Windows XP operating systems. Work is underway to add Vista to the list of Windows platforms certified for Simtrak™. More later.

ON A MAC

Though Premier Software, Inc., does not support operation of its software on a Mac, more than one customer reports successfully doing so. They use special software from Parallels, Inc., Renton, Washington, to run a Windows application on their Mac. Also, a spokesman for Parallels says they ran Simtrak™ Mobility under their special software in a successful company test. While this news is nice to hear, Premier Software, Inc., is sticking to Windows for its development platform and support.

PDA

Premier Software, Inc., continues to watch PDA technology trends. Until there are further improvements in memory capacity, storage space size, data transfer speeds, and operational stability (reset) we will consider the PDA not yet able to properly handle the sports medicine data needs of speed, ease of use, and protection of records integrity.

Backup Your Data. Though critically important for sports medicine records, backups do get overlooked. Simtrak™ Mobility includes a backup utility to help the athletic trainer perform backups often and easily. Below is a Help Guide about how to use that utility. See our entire Simtrak™ Help Guide series at our web site, www.simtrak.com, under the Help tab.



Simtrak™ Mobility

BACKUP

the Simtrak™ Help Guide series

By now, you are familiar with the Main Menu. The Backup utility is located under the Utilities tab on the Main Menu.

When you click on Utilities, you will see a drop-down menu, shown at the right.

Select Backup. You will be directed to a Backup System and Data note.

Read the note, and ensure you are the only user logged into the software.

Click the Browse button, bottom of the screen, to find the location where you want to place the backup files.

The Select Directory screen will display, shown on the next page (*continued next page, see Backup*)

Utilities	ISS	Window	Help
Reindex			
Repair Tables			
View/Reset Counters			
Active Users Report			
Backup			
Import Schedule			
Close Year			
Export			
Import			
Merge Personnel			
Recall Deleted Personnel			

SPORTS TRIVIA

Who was the first golfer to win more than \$1 million in official earnings in a single year.



- A. Lee Trevino
- B. Arnold Palmer
- C. Curtis Strange
- D. Jack Nicklaus

ANSWER: Correct answer is first letter in word clubhouse.



INJURY SURVEILLANCE FEATURE

For government and institutional study groups, leagues, and conferences world-wide, there is a unique data collection/reporting feature available within Simtrak™ Mobility — the Injury Surveillance System (ISS).

This ISS feature enables the export of selected data from within your Simtrak™ sports medicine data files. In addition, the ISS feature has 45 extra fields that can be custom named by the user for additional data that a special ISS project might include.

Data can be exported readily to your research center in a variety of formats (.sdf, .csv, .txt, .xls) and directly into your statistical analysis package.

SPORTS MEDICINE RESEARCH BREAKTHROUGH

Sports medicine research has in the past typically relied on manual data collection. By its nature, the manual collection process imposes physical and budgetary restrictions on the sample size that can be studied, the time period and geographical area over which a study can be conducted, and the number of data variables to be collected.

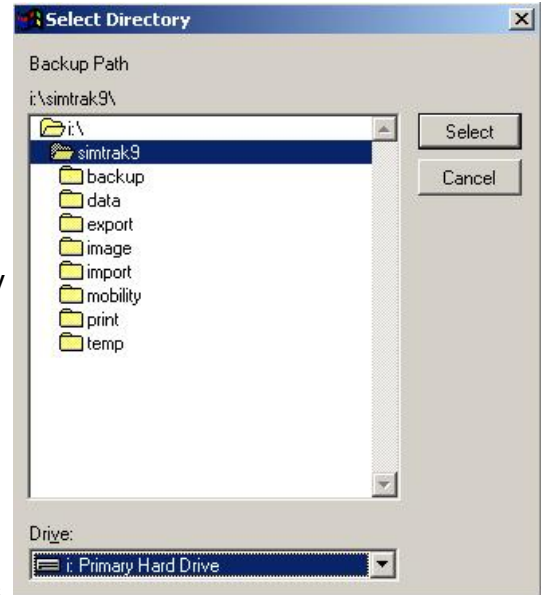
The Simtrak™ Mobility ISS system breaks new ground by enabling entirely digital collection of data, the collection of data over any size geographical area, and the collection of dozens of data fields. Moreover, users report needing as little as one minute per injury or other reporting instance for data entry, which results in improved participation rates and data quality.

Backup (continued from first page)

Find the drive on your computer or on your network where you want to store the backup, by looking in the Drive field at the bottom of the window of the Select Directory window (at right).

When you have your drive chosen, then choose the folder on that drive from those displayed at the top of the (at right) Select Directory screen. This

will then be your backup path, as shown in the small letters under the words Backup Path (top of screen).



Click on the Select button. Then click on the Proceed button in the Backup screen that immediately shows itself. Click OK when asked. Next, a black screen will appear showing the backup files as they are being processed. After about a minute, the backup will be complete and automatically you will be returned to the main Simtrak™ Mobility screen for continued use of the software system.

Periodically, you will see a backup reminder message when you log in to the software. You can set this message to display every 5, 10, 15, 20, 25, or 30 days.

Plan carefully where you want your backups to reside, and make sure you do them regularly.

THIRD PARTY PROVIDER PROGRAM

- HOSPITALS
- CLINICS
- OUTREACH

Standardize your documentation at each outreach location with Simtrak™ Mobility.

Maintain a master database of all locations consolidated at your main office using the Simtrak™ Premier Synchronizer.

Provide outstanding reporting to your client management and their parent constituents.

Tel: 630 562-4100, Email: sales@simtrak.com